

Houstoun Gate Locomotive Works Steeplecab Loco Body Assembly Instructions (LB2)

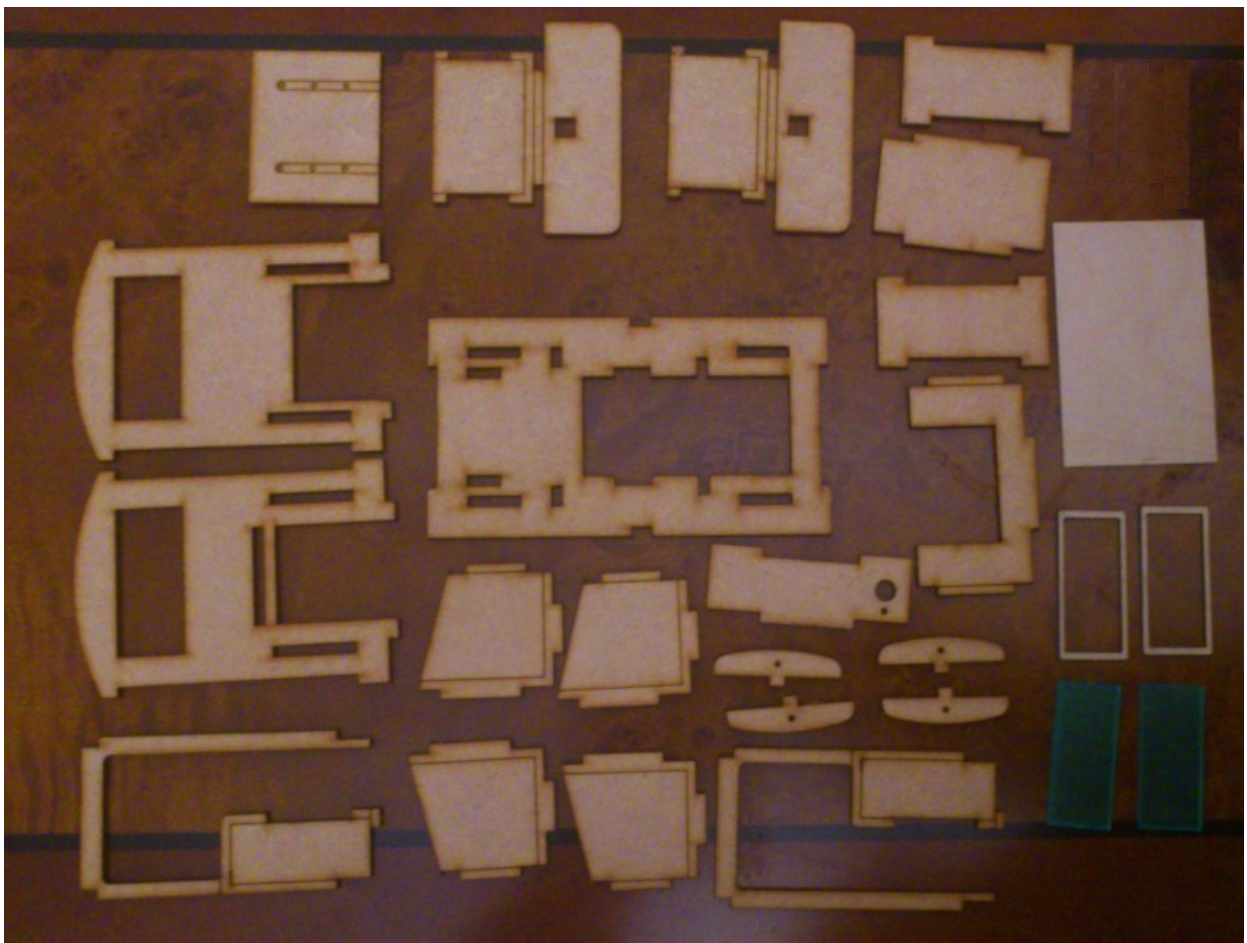
It is suggested that you read these instructions through before commencing construction.

A minimum of tools are needed to assemble the kit. Sandpaper and sanding block, some strong rubber bands or weights to hold parts in place while the glue dries.

This kit requires glue and paint to complete. It can be built entirely with PVA (exterior type) or aliphatic resin. A favourite glue is Titebond 3 aliphatic glue. Excess glue can be wiped away with a damp rag.

MDF is not moisture proof and the model should therefore be painted or varnished before use. First apply a sealer/primer – Rustins MDF sealer, or grey automotive primer are recommended. The cut edges may need more than one application of primer to seal them. Cans of automotive spray paint work well and give a good finish. If brush painting then use acrylic or enamel paint.

Kit Contents

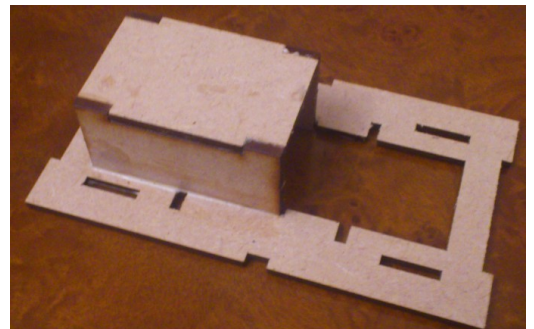
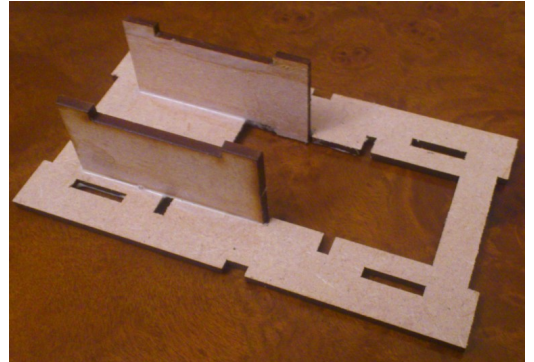


Assembly

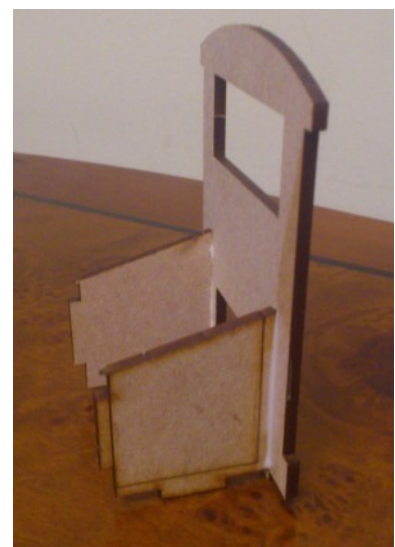
Carefully separate the parts from their sheets. Wriggling them lightly is normally enough to break the retaining tab. You can also cut the tabs with a sharp modelling knife. Sand the retaining tabs away on all parts before beginning assembly.

Glue the parts together in the sequence shown in the pictures below. It is worth trial fitting the parts of the loco together first to get an idea of how it goes together. If you intend to paint the inside of the cab then it is a good idea to do so before you add the roof or windows.

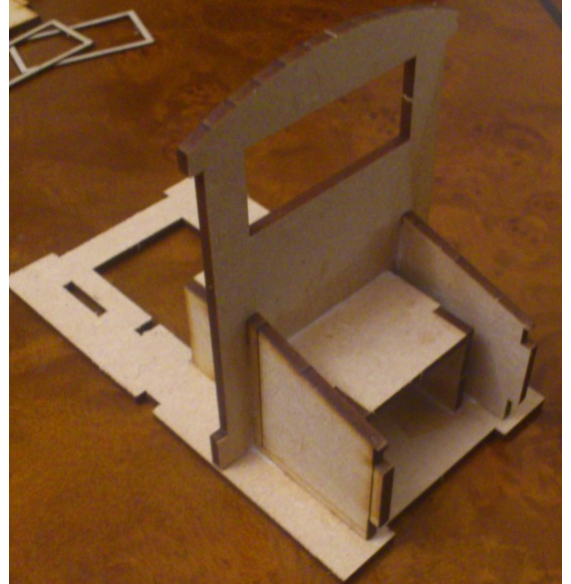
Assemble the battery compartment



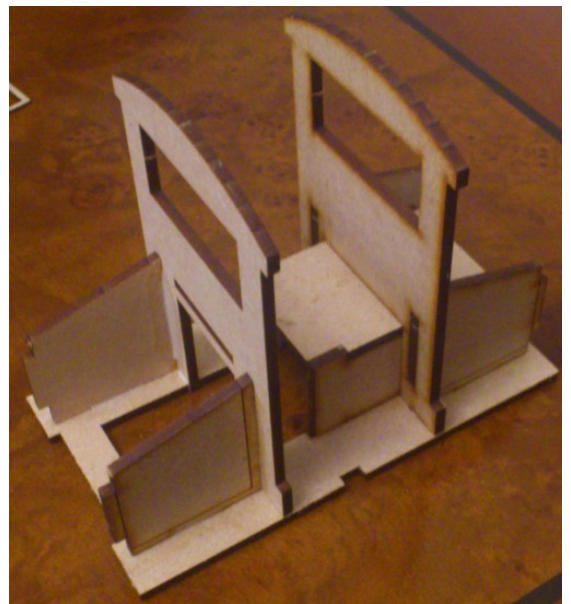
Glue two sloping sides to the cab back (The cab front and back are handed, the front has an additional slot in it for the control panel).



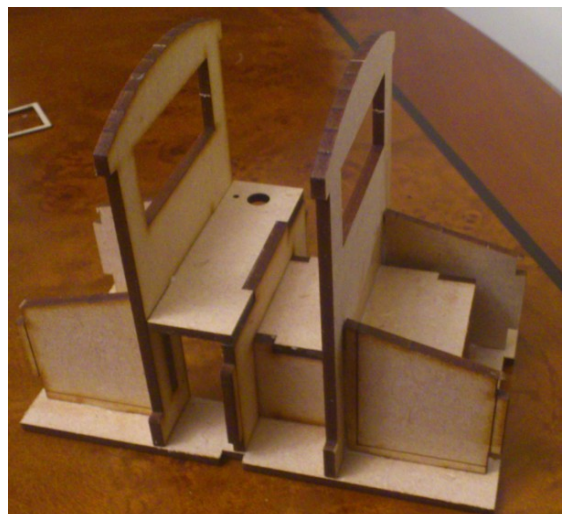
Locate the cab back over the battery box onto the loco floor



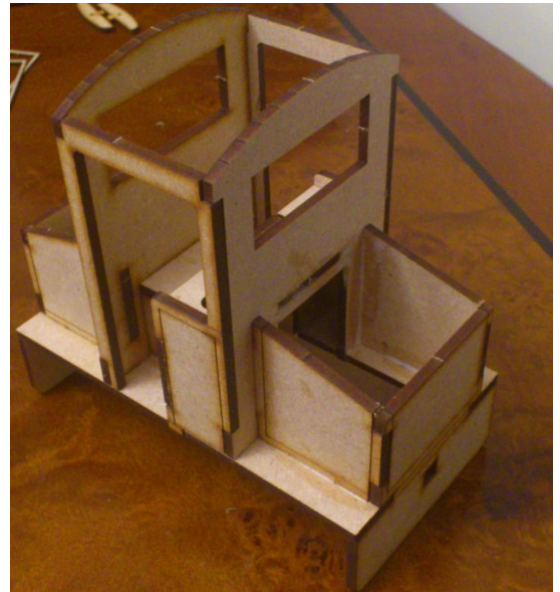
Repeat the steps with the cab front parts



Locate the console top and side over the battery box and into the locating hole on the cab front



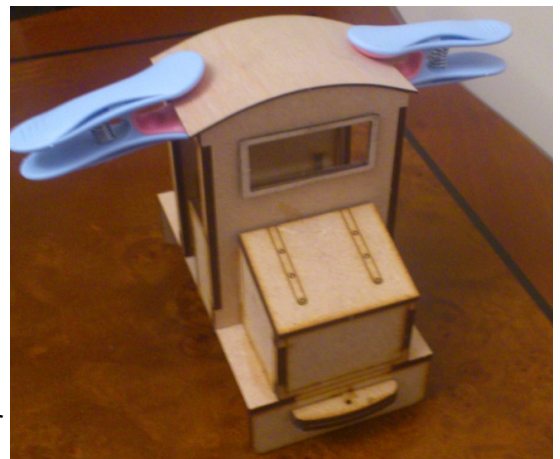
Glue the cab sides in place. Use clamps or elastic bands to hold the assembly in place while the glue sets



Locate the front and back sections with integral buffer beams onto the loco floor

(You may like to paint the inside of the cab before fixing the roof and windows)

Remove the protective film from both sides of the windows and glue the windows in place (If you have it a little contact adhesive is useful for this. **DO NOT USE** superglue or you risk fogging the window material)

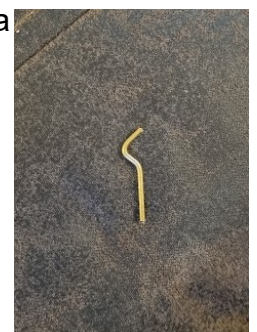


Fix the window surrounds in place

Glue the roof in place using plenty of glue. Clamp it in place with elastic bands or clamps and leave overnight for the glue to set hard

Assemble the two parts of the buffer/couplings in place and insert in the locating hole in the buffer beam

If using either of our chassis use the brass coupling pins from that kit to make a coupling hook using pliers to form a hook for a coupling chain and insert this into the 1.2mm hole in the buffer coupling



Tip - Some people prefer to round off the front of the bonnets before painting.



This is a simple kit but you may want to personalise your loco with grab handles, driver etc. The limit is your imagination!

If you would like to send pictures of your finished loco to pictures@hglw.co.uk we would love to see them and use them on our website www.hglw.co.uk or facebook page www.facebook.com/hglocoworks

The loco is designed to be a push fit on the HGLW 4 wheel drive chassis or HGLW Deluxe chassis.

There is a hole in the cab console to accommodate the switch from the chassis kit.

We hope you enjoy your kit, but if you have any problem with construction email our technical help line at techhelp@hglw.co.uk