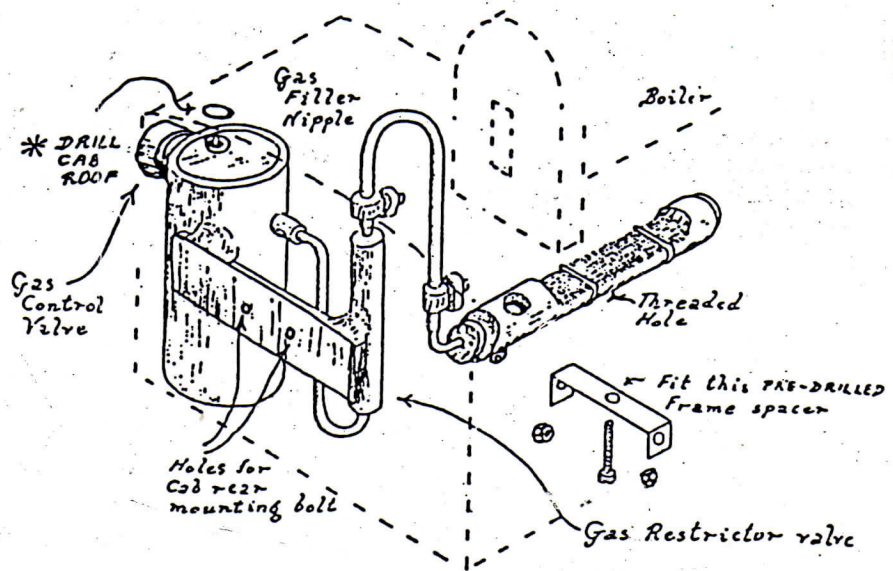


RADIO CONTROL FOR YOUR MAMOD !
 Ref R5/C Complete dry battery
 single channel system for fitting
 to loco with receiver and battery
 in truck (not included).
 Ref RC/3 Servo and actuator linkage
 as used in complete kit.



MERLIN GAS BURNER. View of working parts.

Merlin Gas Burner Conversion for Mamod Locomotives.

Before filling and firing with butane, ensure that there is no inflammable material in the vicinity of the locomotive.

Use cigarette lighter gas. When the tank is full, gas will blow back from the filler nipple. **WAIT** one minute before igniting.

Fill water through safety valve to maximum level on the water gauge. **THIS IS VITAL.**

Open gas valve slightly, then ignite gas vapour by holding a flame close to the wheels. **CAUTION** - If gas does not ignite quickly, keep your face away from the loco incase excess gas burns suddenly around it.

The gas valve fully open will provide fast steam raising and maximum power, but for long duration should be set so that the burner is barely audible once steam has been raised.

The locomotive is controlled in the normal manner by the lever on the front buffer beam.

Should the locomotive derail and overturn, the gas restriction valve will operate to reduce the burner flame. It can be reset by tapping the cab back.

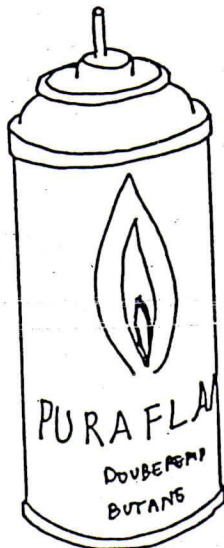
The maintenance requirements are negligible. If the rubber hose shows any sign of fraying or deterioration, send to Merlin Locomotive Works for a replacement.

MERLIN GAS BURNER for MAMOD ref. LA/16

To fit the new gas burner, first discard the meths burner tray and then remove the Mamod chassis spacer. Locate the new burner and screw in the pre drilled frame spacer/burner support bracket. Refer to the diagram overleaf. Drill two holes in the cab rear to accept the two mounting bolts, which then pass through the two holes in the tank mounting plate. Secure with the nuts provided. Drill a larger hole (about 5mm dia) in the cab roof and ensure the gas refill spout locates properly on the tank inlet nipple.

Use in accordance with operating instructions overleaf. Examples of suitable gas refill cans are illustrated below. Note that great economies are achieved by using the larger sizes, although they obviously represent a greater initial outlay. Keep gas valve shut during filling and never ignite before escaped gas has time to disperse. Only open the gas valve a maximum of one turn in operation.

Observe these rules for safety - it is only common sense !.



Large 225 ml.



Small 60/80 ml.

BUTANE
GAS
CANS.

MAINTENANCE.

If the initial performance is poor, this will be due to grease used in fitting 'O' rings and will improve with use. No hiss of gas indicates a blocked jet. The jet holder is secured with hermetite but may easily be removed. Insert a fine wire strand to clear the jet aperture. Set the jet back carefully at the original adjustment. Provided you always start with a full boiler, there is no risk of running it dry because the fuel tank is designed to empty before the water exhausts.



This burner has had the outer mesh replaced to improve the radiant performance.

Photos Copyright of Chris Cairns, Glasgow, Oct 2013