

Houstoun Gate Locomotive Works

Round End Open Wagon Kit Assembly Instructions - OW1

It is suggested that you read these instructions through before commencing construction.

A minimum of tools are needed to assemble this kit. Sandpaper and sanding block plus some clamps, strong rubber bands or clothes pegs to hold parts in place while the glue dries. This kit requires glue and paint to complete. It can be built entirely with PVA (exterior type) or aliphatic resin. Our favourite is Titebond III waterproof aliphatic. Excess glue can be wiped away with a damp rag. MDF is not moisture proof and the model should therefore be painted or varnished before use. First apply a sealer/primer. MDF sealer, thinned PVA or grey automotive primer all do the job. The cut edges may need more than one application of primer to seal them.. Automotive spray paint in cans works well and gives a good finish. If brush painting use acrylic or enamel paint.

Kit Contents



If not already done start by carefully separating the parts from their sheets. Wriggling them lightly is normally enough to break the retaining tab. Sand the retaining tabs away on all parts before beginning assembly.

Wagon Chassis

Glue the spreader to the centre of the sub frame base, then glue the side rails in place. The slots and tabs ensure parts are properly aligned.



Glue the buffer beams onto the sub frame. Either elastic bands or domestic clothes pegs can be used for clamping while the glue sets.



Glue the two halves of each buffer together



Attach the buffers to the buffer beam.

(Some folk may choose to add their own favourite propriety couplings at this point in place of the supplied ones to suit their preferred type for their own line)



Assemble the axle boxes by layering the three parts for each axle box. Inner mounting (with large hole), then spacer (with small hole) finally outer end cap

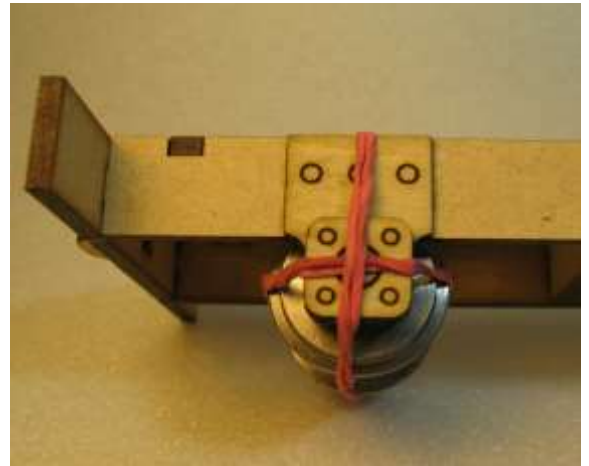


Insert a brass bearing into each axlebox



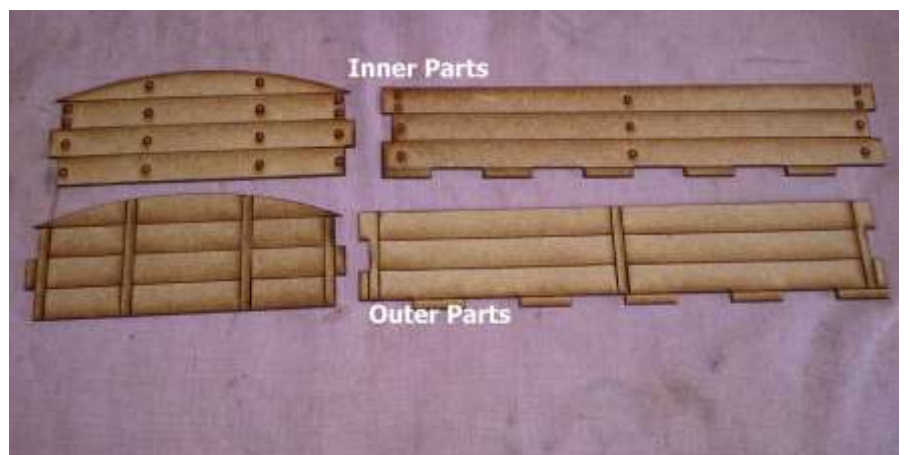
Before gluing the axle boxes onto the chassis do a dry fit by placing one or two washers between the wheel set and bearing to ascertain how tight you want the axles to be in the frame. One washer on each side gives a fair amount of sideways play to allow for less than perfect track, two allows less sideways play.

Glue the axle boxes in place. Make sure you don't get glue into the bearings. Align with the top of the chassis and hold in place with rubber bands.



Wagon Body

The sides and ends of the wagon have an inner and outer part. To help identify the correct parts the outer part has the strapping outline and the inner has circular bolt markings.



Glue the respective inners and outer parts together. Ensure you pair an inner with an outer
(If you end up gluing two inners or outers together accidentally contact techhelp@hglw.co.uk).



Assemble the wagon sides onto the base to form a box.
Depending on the thickness of gluing of the wagon side parts you may need to either lightly sand the corner end plank detail or add a little wood filler to fill any void where the ends meet the sides



Glue the wagon body in place centrally on top of the chassis, ensuring an even amount of overhang on all sides.

This would be a good time to apply a paint finish to the model before adding the strapping detail



Apply two long upright straps to the central positions indicated on the wagon end
Apply two short straps to the outer positions indicated. See photo.

Apply the side hinge details as indicated on the photo

Note, the end strapping sheet includes two spare straps of each type



Shape the brass pins to form coupling hooks as shown and insert them into the holes in the buffers

The rectangles in the chassis base may be used to add lead to provide additional weight if you should so desire. This is available from our webshop see www.hglw.co.uk



This completes the wagon assembly

If you would like to send pictures of your finished kit to pictures@hglw.co.uk we may share them on our website www.hglw.co.uk or facebook page. www.facebook.com/hglocoworks

We hope you enjoy your kit, but if you have any problem with construction email our technical help line at techhelp@hglw.co.uk